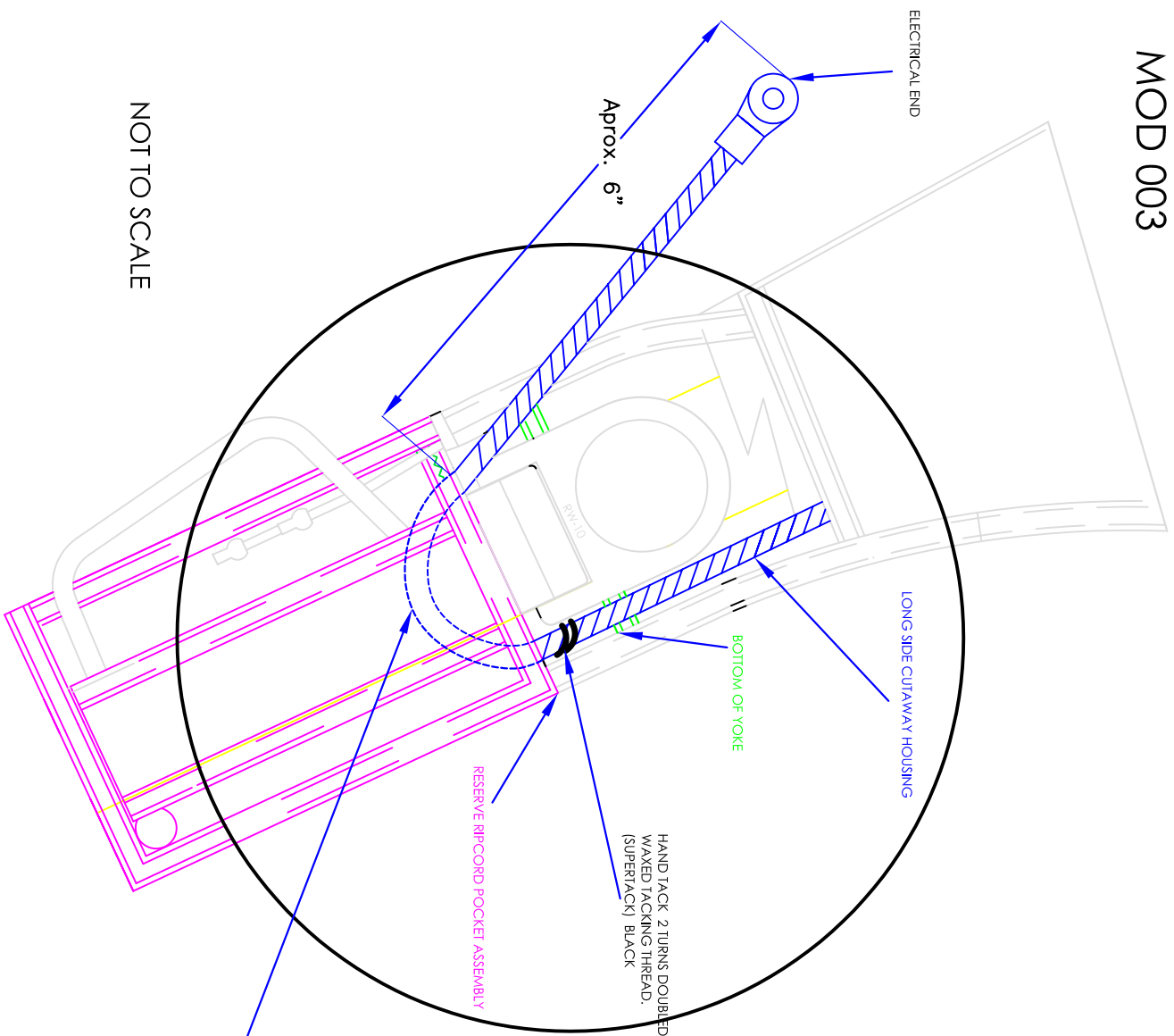


# MOD 003



NOT TO SCALE

Rev No.	Revision Note	Date	Signature	Checked
1	ADDITION OF NOTE FOR HIDDEN PORTION OF RELEASE HOUSING	20 JUNE 05	DLS	Checked

**NOTE:**

ADJUST THE RELEASE HOUSING SO THAT THERE IS APPROXIMATELY 6 INCHES FROM THE END OF THE HOUSING TO WHERE IT ENTERS BEHIND THE RESERVE RIPCORDER POCKET ASSEMBLY. (THIS WILL ALLOW FOR PROPER LOCATION OF THE EXCESS CABLE HOUSING BEHIND THE RESERVE RIPCORDER POCKET ASSEMBLY, ). THERE SHOULD BE APPROX. 255mm +/- 13mm OR 10" +/- 1/2" FROM THE TACKLING POINT TO THE ELECTRICAL END.


PLACE A HAND TACK (2 TURNS DOUBLED WAXED TACKLING CORD, SUPERTACK) BETWEEN THE BOTTOM OF THE YOKE AND THE TOP OF THE RESERVE RIPCORDER POCKET ASSEMBLY TO SECURE THE LONG SIDE CUTAWAY HOUSING. START AND STOP ON THE BACK PAD, SECURE WITH A SURGEONS KNOT, LOCKING KNOT.

**REFERENCE ONLY:**

LOOP PORTION OF LONG SIDE RELEASE HOUSING IS POSITIONED BEHIND THE RESERVE RIPCORDER POCKET.

**NOTE:**

1. Unless otherwise noted All Dimensions are in Millimeters.
2. All Thread is Nylon and size E or equivalent unless otherwise noted.
3. All Pipe, Thread and webbing ends are hotknit/sealed unless otherwise noted.
4. Tolerance +/- .3mm, unless otherwise noted.

DRAWN BY DSINGER	DATE 6/14/05	APPROVED BY DSINGER	FILE NAME MOD003	SCALE NONE
Property Rights of <b>Sun Pain Products, Inc.</b> 4439 Skydive Lane Zephyrhills, FL 33542-6650 <small>Authorized User Only</small>				TITLE PART NO XXXXXX
			MOD003	REVISION 1
			SHEET 1/1	