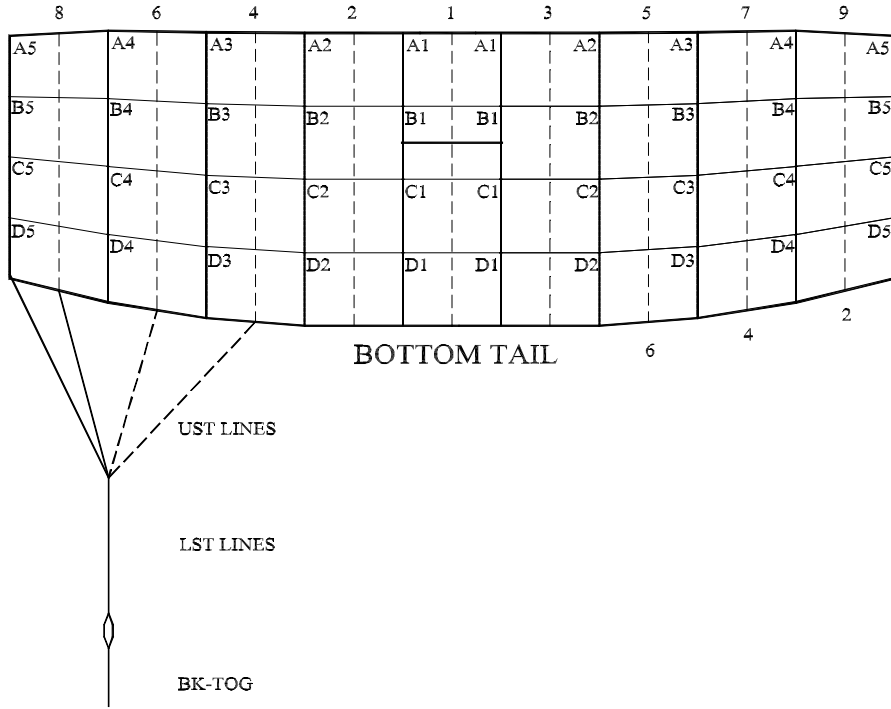




Performance Designs, Inc  
 1300 E Int'l Speedway Blvd  
 DeLand FL 32724  
 Telephone: 386-738-2224  
 Fax: 386-734-8297

## LINE TRIM CHART FOR

# MILITARY SILHOUETTE 260 - 400



|            | MS-260  | MS-280  | MS-300  | MS-330  | MS-360  | MS-400  |
|------------|---------|---------|---------|---------|---------|---------|
| A1         | 164 1/2 | 167 1/2 | 170 3/8 | 178 3/4 | 186 5/8 | 196 7/8 |
| A1-B1      | 3 1/8   | 3 1/4   | 3 3/8   | 3 1/2   | 3 3/4   | 3 7/8   |
| A1-C1      | 11 1/2  | 11 7/8  | 12 1/4  | 13      | 13 1/2  | 14 1/4  |
| A1-D1      | 22 1/2  | 23 1/2  | 24 1/4  | 25 1/2  | 26 3/4  | 28 1/4  |
| A2         | 164 1/2 | 167 1/2 | 170 3/8 | 178 3/4 | 186 5/8 | 196 7/8 |
| A2-B2      | 3 1/8   | 3 1/4   | 3 3/8   | 3 1/2   | 3 3/4   | 3 7/8   |
| A2-C2      | 11 3/8  | 11 3/4  | 12 1/4  | 12 7/8  | 13 1/2  | 14 1/4  |
| A2-D2      | 22 3/8  | 23 3/8  | 24 1/4  | 25 1/2  | 26 5/8  | 28      |
| A3         | 164 3/8 | 167 1/2 | 170 1/4 | 178 5/8 | 186 1/2 | 196 3/4 |
| A3-B3      | 3       | 3 1/8   | 3 1/4   | 3 1/2   | 3 5/8   | 3 3/4   |
| A3-C3      | 11      | 11 3/8  | 11 7/8  | 12 1/2  | 13      | 13 5/8  |
| A3-D3      | 21 7/8  | 22 3/4  | 23 5/8  | 24 7/8  | 26      | 27 1/4  |
| A4         | 164 1/4 | 167 3/8 | 170 1/8 | 178 1/2 | 186 3/8 | 196 5/8 |
| A4-B4      | 2 3/4   | 2 7/8   | 3 1/8   | 3 1/4   | 3 3/8   | 3 1/2   |
| A4-C4      | 10      | 10 1/2  | 11 1/8  | 11 3/8  | 11 7/8  | 12 1/2  |
| A4-D4      | 20 1/8  | 21      | 21 7/8  | 23 1/8  | 24      | 25 1/8  |
| A5         | 164 1/8 | 167 1/4 | 197     | 178 3/8 | 186 1/4 | 196 1/2 |
| A5-B5      | 2 3/4   | 2 7/8   | 3       | 3 1/8   | 3 3/8   | 3 3/8   |
| A5-C5      | 8 7/8   | 9 1/4   | 9 5/8   | 10 1/8  | 10 1/2  | 11 1/8  |
| A5-D5      | 17 5/8  | 18 1/2  | 19 1/4  | 20 1/8  | 21 1/8  | 22 1/8  |
| LST        | 116 1/2 | 120 1/8 | 124 3/8 | 131 1/2 | 137 1/4 | 144 1/2 |
| A5-UST1    | 11 3/8  | 14 1/8  | 16 7/8  | 18 5/8  | 19 3/8  | 20 1/4  |
| A5-UST2    | 11 3/8  | 14 1/8  | 16 7/8  | 18 5/8  | 19 3/8  | 20 1/4  |
| A5-UST4    | 11 3/8  | 14 1/8  | 16 7/8  | 18 5/8  | 19 3/8  | 20 1/4  |
| A5-UST6    | 11 3/8  | 14 1/8  | 16 7/8  | 18 5/8  | 19 3/8  | 20 1/4  |
| B STAB SLK | 1/2     | 1/2     | 1       | 1       | 1       | 1       |
| C STAB SLK | 1       | 1       | 1 1/2   | 1 1/2   | 1 1/2   | 1 1/2   |
| D STAB SLK | 1 1/2   | 1 1/2   | 2       | 2       | 2       | 2       |
| BK-TOG     | 24 1/2  | 23 1/8  | 24 7/8  | 22 1/8  | 23      | 24 3/8  |